

Allen Heritage Village

352 ST MARY DRIVE



THIS MONTH AT-A-GLANCE

Construction is under way for both the Heritage Village Pavilion (#10 on map) and the Lane-Carroll Farm House (#9 on map)! The majority of the work has been focused on mobilization, cleanup, and material cataloging. Structural foundation work is underway for the Heritage Village Pavilion. Structural framework for the Lane-Carroll House is progressing. The Heritage Guild and City of Allen Staff are reviewing product submittals and mock-ups for various aspects of the construction improvements. Both projects are on schedule, as anticipated.

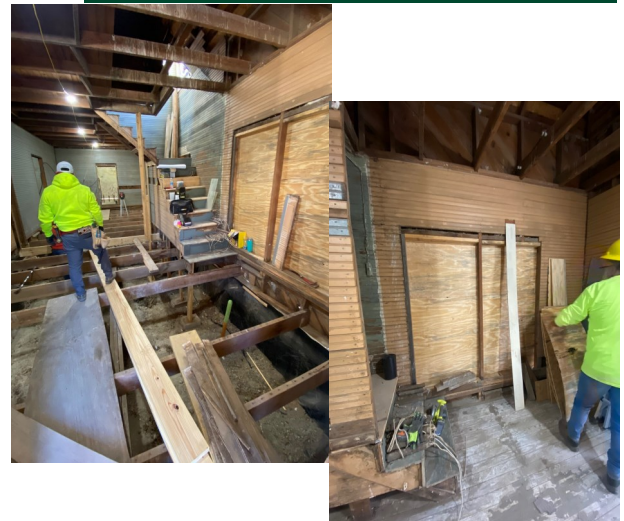
TOTAL PROJECT BUDGET \$2,205,059*

APPROVED BY CDC

*Including \$2,055,059 approved this project cycle on January 18, 2021 and previously approved \$150,000 for the Heritage Pavilion.



MOBILIZATION & CATALOGING



FIRST FLOOR, MOBILIZATION & CLEAN-UP

TIMELINE

Pre-Design	April-June 2021
Schematic Design	July-August 2021
Design Development	September-December 2021
Construction Documents	January-June 2022
Bidding, Negotiation by Client	July-August 2022
Construction Administration	8-10 months

VILLAGE MAP

1. CHURCH ENTRY PLAZA
2. ST. MARY BAPTIST CHURCH
3. EXISTING TRAIL
4. CONCRETE WALKS & PAVEMENT
5. DECORATIVE FENCE

6. BARN
7. TOOL SHED
8. TENANT HOUSE
9. FARM HOUSE
10. PAVILION
11. RESTROOMS

12. BOLIN HOUSE
13. MONUMENT SIGN
14. ALLEN CHRISTIAN CHURCH
15. LYNGE HOUSE

PROJECT SCOPE

